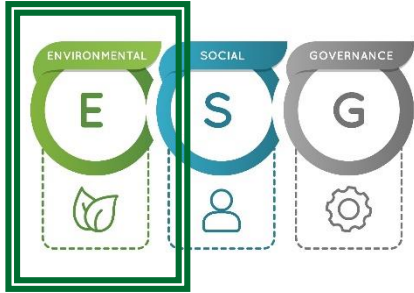


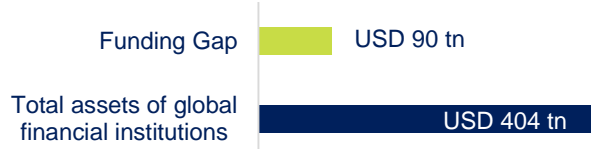
Twelve Capital - Climate Transition Strategy



As an insurance investment specialist Twelve Capital has a strong commitment to ESG and Sustainability throughout its strategies. The Climate Transition Equity Strategy in particular focusses on the Environmental aspects of climate sustainability while also considering social and governance aspects.

The financial industry is paramount in addressing the funding gap

To reach net-zero by 2050, around USD 90 trillion of infrastructure investment is required over the next 15 years alone, according to the Intergovernmental Panel on Climate Change (IPCC).



Source: Statista, IPCC 2021

Total assets of global financial institutions reached an amount of USD 404 trillion by the end of 2019, according to statista.



Financial services are key for a net-zero economy, as companies need funding and insurance to manage risks from climate change.

Climate Transition Strategy in detail

Twelve Capital takes responsibility and aims to contribute by investing in companies that are financing the transition to reorient capital in a sustainable manner.

Twelve Capital is leveraging the financial industry, which commands a large pool of capital, more of which could be steered towards sustainable economic activities.



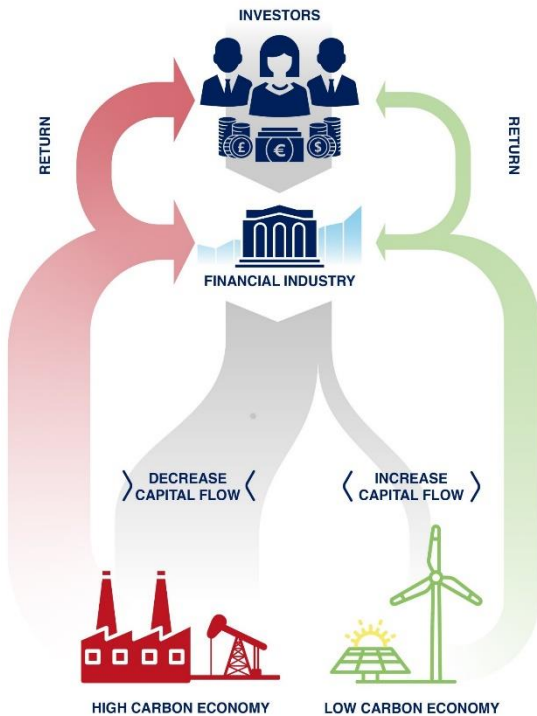
The market opportunity

Our focus on ESG is impactful and a major driver of underlying performance.

The “E” matters and is supposed to enhance performance. Environmental leadership can improve brand recognition, can help to reduce costs, can reduce interventions based on new climate goals and may improve returns by allocating capital into the right areas.

Climate Regulation is gathering pace and sets the precedent for asset rotation and capital flow into ESG and Sustainable Assets.

Sectors of focus



Source: Twelve Capital

Insurance / Re-Insurance Companies

- Providing insurance to sustainable companies / assets
- Investing in sustainable assets

Banks

- Lending to sustainable activities / companies
- Offering sustainable financing

Technology sectors like FinTech and InsurTech

- Key enabler of measuring and analysing climate change
- Automation and machine learning in risk modelling

Within those sectors Twelve Capital looks for companies that

show clear evidence of steering their capital to low carbon, climate resilient activities (i.e. launch of new green products, services and underwriting activities)

and

demonstrate their commitment to reduce their energy consumption CO₂ / GHG emissions

and

have a minimum standard on ESG based on our in-house ESG process

The two pillars to help limit the impact of climate change are

Mitigation⁽¹⁾ = Reducing emissions

Adaptation⁽¹⁾ = Reducing vulnerability

By steering capital into the right directions Twelve Capital believes that, besides doing “the right thing”, there are opportunities for generating value for investors.

(1) As defined by the EU taxonomy for sustainable activities.

About Twelve Capital

Twelve Capital is an independent investment manager specialising in insurance investments for institutional clients. Its investment expertise covers the entire balance sheet, including Insurance Bonds, Insurance Private Debt, Catastrophe Bonds, Private Insurance-Linked Securities and Insurance Equity. It also composes portfolios of its Best Ideas. It was founded in October 2010 and is majority-owned by its employees. It has offices in Zurich, London and Munich.

Contact

Twelve Capital AG
Dufourstrasse 101
8008 Zurich, Switzerland
Tel.: +41 (0)44 5000 120

Twelve Capital (UK) Ltd
Moss House, 15-16 Brook's Mews
London W1K 4DS, Great Britain
Tel.: +44 (0)203 856 6760

Twelve Capital (DE) GmbH
Theatinerstrasse 11
80333 Munich, Germany
Tel. +49 (0)89 839 316 112

info@twelvecapital.com
www.twelvecapital.com

Disclaimer

This material has been prepared by Twelve Capital AG, Twelve Capital (UK) Limited, Twelve Capital (DE) GmbH or their affiliates (collectively, "Twelve Capital"). This material has been furnished solely upon request and is intended for the recipient personally and may not be reproduced or otherwise disseminated in whole or in part without prior written consent from Twelve Capital. It is expressly not intended for persons who, due to their nationality or place of residence, are not permitted access to such information under local law as the product may not be authorised or its offering may be restricted in certain jurisdictions. It is the responsibility of every investor to satisfy himself as to the full observance of such laws, regulations and restrictions of the relevant jurisdiction. This is an advertising document. This information was produced by Twelve Capital to the best of its knowledge and belief. However, the information herein may be based on estimates and may in no event be relied upon. All information and opinions contained in this document are subject to change without notice. Twelve Capital's analyses and ratings, including Solvency II compliance analysis, Twelve Capital's Counterparty Credit Rating and Twelve Capital's Legal Rating, are statements of Twelve Capital's current opinions and not statements of fact. Source for all data and charts (if not indicated otherwise): Twelve Capital. Twelve Capital does not assume any liability with respect to incorrect or incomplete information (whether received from public sources or whether prepared by itself or not). This material does not constitute a prospectus, a request/offer, nor a recommendation of any kind, e.g. to buy/subscribe or sell/redeem investment instruments or to perform other transactions. The investment instruments mentioned herein involve significant risks including the possible loss of the amount invested as described in detail in the offering memorandum(s) for these instruments which will be available upon request. Investments in foreign currencies involve the additional risk that the foreign currency might lose value against the investor's reference currency. Investors should understand these risks before reaching any decision with respect to these instruments. The information does not take account of personal circumstances and therefore constitutes merely promotional communication, and not investment advice. Consequently, Investors are advised to take all necessary legal, regulatory and tax advice on the consequences of an investment in the product. Past performance is no indication or guarantee of future performance. The performance shown does not take account of any commissions and costs associated with subscribing to and redeeming shares.

Note to EEA investors: when distributed in the EEA, this information has been distributed by Twelve Capital (DE) GmbH in accordance with the terms of its authorisation and regulation by the Bundesanstalt für Finanzdienstleistungsaufsicht (BaFin).

Note to US investors: Neither this information nor any copy thereof may be sent, taken into or distributed in the United States or to any U.S. person (within the meaning of Regulation S under the US Securities Act of 1933, as amended). The products and services described herein may not be offered to or purchased directly or indirectly by US persons.

Twelve Capital AG is licensed as "Manager of collective investment schemes" by the Swiss regulator FINMA. Twelve Capital AG is incorporated in Switzerland, registered number 130.3.015.932-9, registered office: Dufourstrasse 101, 8008 Zurich. Twelve Capital (UK) Limited is incorporated in England & Wales: company number 08685046, registered office: Moss House, 15-16 Brook's Mews, London, W1K 4DS. Twelve Capital (UK) Limited is authorised and regulated by the UK Financial Conduct Authority and is registered as a commodity pool operator ("CPO") with the U.S. Commodity Futures Trading Commission ("CFTC") and is a member of the National Futures Association (the "NFA") in such capacity. Such registrations and membership in no way implies that the FCA, the SEC, the CFTC or the NFA have endorsed Twelve Capital (UK) Limited's qualifications to provide the advisory services described in this document. Twelve Capital (DE) GmbH is authorised and regulated by the Bundesanstalt für Finanzdienstleistungsaufsicht (BaFin) in Germany. Twelve Capital (DE) GmbH is incorporated in Munich, Germany, commercial register number (registry court: Munich) HRB 252423, registered office: Theatinerstrasse 11, 80333 Munich.

© 2021 Twelve Capital. All Rights Reserved